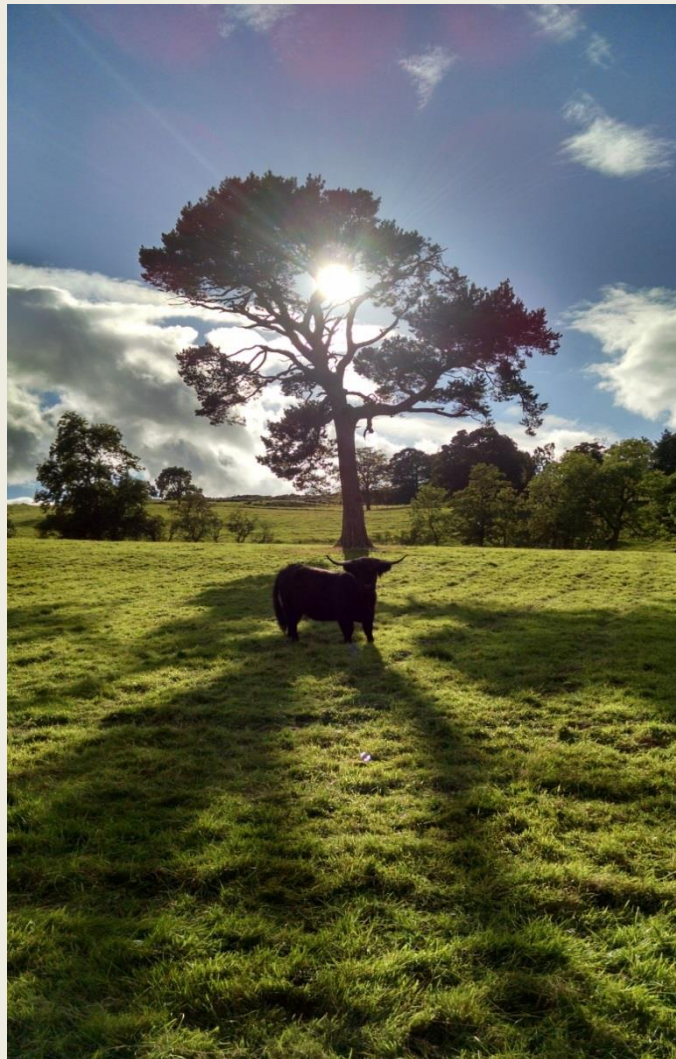




Cringletie House

An intimate Castle Hotel in the Country

Corporate Information



Corporate Information

Your event is special and personal so that is what we want to provide; personal attention all the way through!

Although we have defined a few packages, freedom and flexibility reign at Cringletie and we can create a package that fulfils the aims that you have about your event and making sure that your goals are achieved.

Delegate Packages & Facilities

Entertainment and Team Building

Menu Samples

Exclusive Use and Prices

Rooming List

Packages offer the basic something, however we can also start with a blank piece of paper and design the whole event just as you wish!

“Basic” 24 hour delegate rate at £165.50 per person plus VAT:

Overnight accommodation in a luxury en-suite bedroom

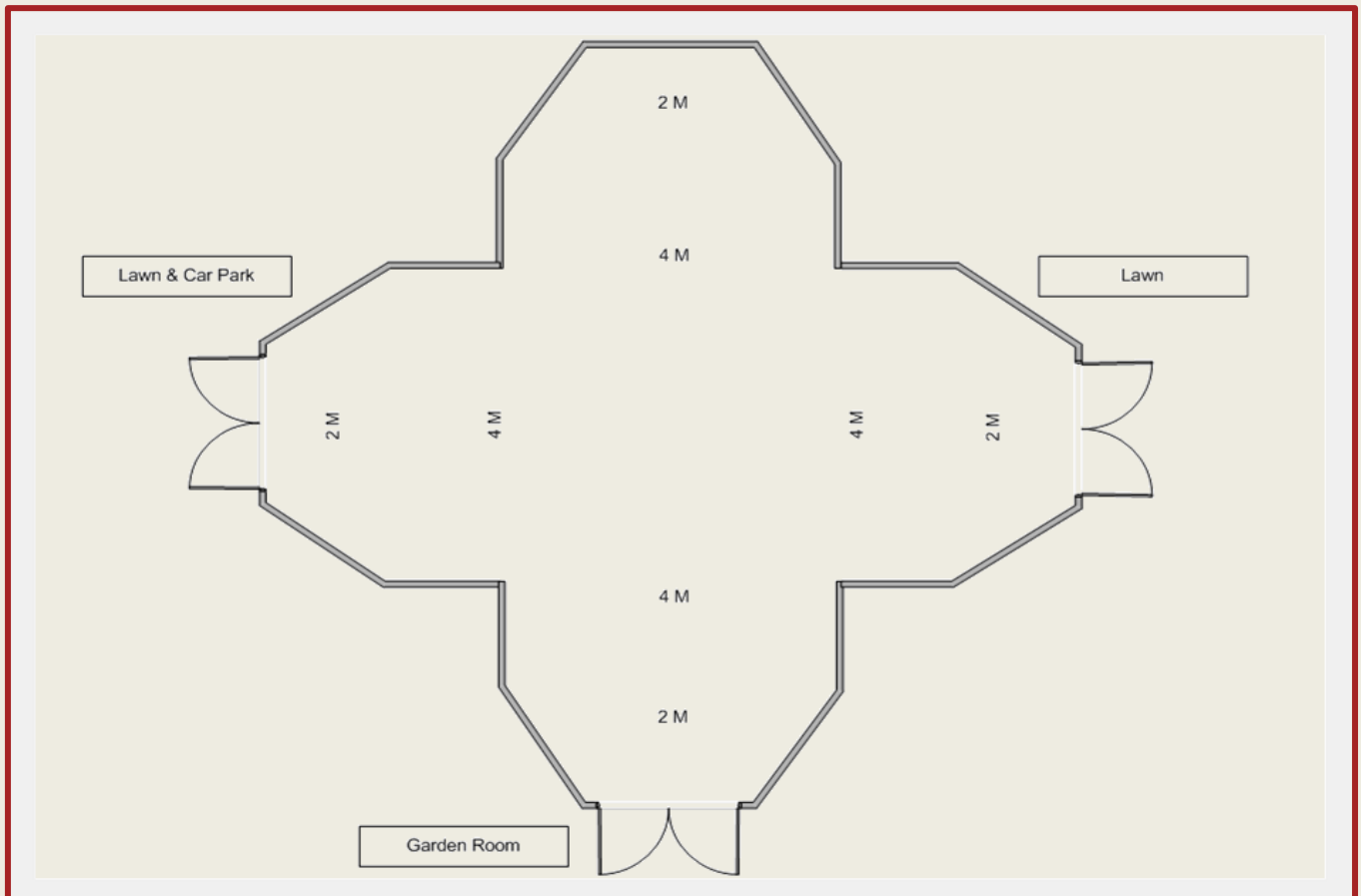
- Three course dinner served either in a private room or in the restaurant
- Full Scottish breakfast
- Meeting room hire
- Tea/coffee and biscuits served throughout the meeting
- Working lunch served in the meeting room or Sutherland Restaurant
- Table accessories (writing paper/implements, sweets, water, glasses and cordial)
- Complimentary wifi connectivity
- A range of secretarial services is available on request

“Basic” day delegate rate at £24.95 per person plus VAT:

- Meeting room hire
- Tea/coffee and biscuits served throughout the meeting
- Working lunch served in the meeting room or Sutherland Restaurant
- Table accessories (writing paper/implements, sweets, water, glasses and cordial)
- Complimentary wifi connectivity

Layouts in the conservatory

Theatre style	100	Natural daylight
Boardroom	24	Blackout for projection
Rounds	50	Flipcharts
Cabaret	32	Projector & screen



Meetings **outdoors** or **indoors** where we bring the outside in with using the conservatory



Our WI-FI means you stay connected to the world. Our technology is such that whatever you need we can provide innovation to enjoy ensuring that all MICE are happy.

Cringletie House is a luxury castle-like country venue where the building is over 150 years old and the technical support 150 minutes up to date so that you mix old and new to succeed where others fail.

Other rooms are available depending on requirements
please enquire about possibilities

Other information includes

- Car parking for coaches and up to 30 cars – no charges
- 28 Acres of grounds and lawns
- Multi Experiences from cultural to food and drink
- Scottish Evenings with Ceilidh band, Highland dancers, Haggis ceremony, piper
- Nature walks with specialist maps
- Real log fires
- BBQ and Hog roast facilities
- Accessibility friendly
- A lift to all floors
- Stunning views from all rooms both meeting and bedrooms
- 2 Bars
- Helicopter landing pad
- Privacy and Exclusivity

Entertainment & team building

We are also able to arrange almost anything to enhance your event here; just a few suggestions are:

- Mini Highland games
- Shooting, lasers / clays / air rifle
- Blindfold driving
- Fly casting
- Indoor curling
- Team tasks
- Archery
- Crossbow
- Off and on road cycling
- Magician
- Fishing
- Hunting
- Murder mystery
- Speciality food evenings
 - Themed
 - Hog Roast
 - BBQ
- Tastings
 - Cocktails
 - Wine
 - Whisky
 - Gin
- Musical
 - Bands, ceilidh or otherwise
 - Guitarist
 - Harpist
 - DJ



Sustenance during the entire event

Conference light finger/fork buffet

A mixture of some of the items such as below:

Chef's soup of the day with freshly baked bread

Crispy chicken tempura with sweet chilli dips

Marbled chicken liver pâté and Ayrshire ham hock terrine, real ale chutney

Chicken Jalfrezi with basmati rice and naan bread

Classic macaroni and cheese in mature cheddar sauce and garlic bread

Open Danish style sandwiches of meat, fish, salad, fruit and other toppings

Homemade traditional pork pie

Savoury titbits such as quiche, tartlets, pakora

Assorted salads

Selection of fresh fruit



Sample dinner menu

Starters

Ayrshire ham hock, liver parfait and confit duck delice, hot bon bon, damson and real ale chutney

Carpaccio of pineapple

Passion fruit syrup and mango sorbet

Autumn mushroom pâté

Pickled shimiji mushrooms, croutons, micro salad truffle dressing red wine and port syrup

Warm timbale of smoked and fresh salmon with light Cullen skink

Mains

Breast of chicken

Char grilled vegetables and Cajun spiced potatoes, sweet corn purée, and hickory smoked barbecue sauce

Roast rump and slow cooked shoulder lamb autumn apple chutney, smoked potato purée, braised lentils, seasonal vegetables, Madeira jus

Tikka baked fillet cod with Masala prawns coriander rice, lightly curried coconut sauce

Provençal vegetable and Howgate brie tart wilted spinach, sweet cherry tomato and basil dressing (served with seasonal side salad)

Grilled fillet of prime Scottish beef grill garnish with chunky fries, peppercorn sauce on the side

or

Chef's selection of seasonal vegetables and potatoes, peppercorn sauce

Desserts

Banoffee cheesecake, hot chocolate and cinnamon doughnut, baileys ice cream

Soft centred chocolate fondant, Morello cherry compôte, vanilla mascarpone, sesame wafer

Coconut and Malibu panna cotta with exotic fruits, lemongrass and lime syrup,
passion fruit sorbet

Selection of Scottish cheeses

Coffee and petits fours



Exclusive use and prices

Exclusive use explained

- The entire house and all 13 bedrooms
- The 2-bedroom cottage in the grounds that sleeps four adults
- Full Scottish breakfast each morning
- Use of the 28 acres of grounds including the walled garden
- Games and fun including, croquet, pitch & putt, rounders, boules, badminton, trampoline
- Exclusive Use is from 2pm on the day of arrival to 11 am on the day of departure
- Your personal event co-ordinator to look after you from start to finish

November 2018 through to March 2019		April, May & June September & October 2018		July & August 2018	
Midweek	Friday/Saturday	Midweek	Friday/Saturday	Midweek	Friday/Saturday
£2,000	£3,000	£2,900	£3,950	£3,900	£4,950

Cringletie rooming list

to assist you with allocating the rooms

Room name	Description	Double or twin	Facilities	Guest Name
Traquair Next door to Jedburgh	Spacious ground floor room with wooden floor. Overlooking rear gardens. Suitable for wheelchairs. Disabled facilities.	Junior suite twin or double superking bed Optional: one extra bed**	Bath and shower	
Jedburgh	Ground floor room with wooden floor. Overlooking rear gardens	Classic twin or double superking bed	Shower over bath	
Kelso Next door to Melrose	Spacious room on first floor overlooking the rear gardens and hills beyond	Junior suite with double or twin superking bed Optional: one or two extra bed(s)**	Shower over bath	
Melrose	Very Spacious room on first floor with bay window overlooking rear gardens and hills beyond	Junior suite with four poster and superking bed Optional: one or two extra bed(s)**	Bath and shower	
Glentress Next door to Neidpath	Spacious turret room on the second floor overlooking the woods at the front of the House	Luxury double superking	Shower over bath	
Neidpath	Middle sized turret room on the second floor overlooking the rear gardens and hills beyond	Luxury double king size bed with traditional half poster	Shower	
Selkirk Along the corridor from Glentress + Neidpath	One bedroom suite with a sitting room and a very large Jacuzzi bathroom On second floor overlooking the rear gardens and hills beyond	Suite king size bed	Jacuzzi bath and shower	
West Linton Next to Peebles	Small yet sweet turret room on the second floor overlooking the woods at the front of the House	Small classic double bed	Shower	
Peebles Next to West Linton	Spacious room on the second floor overlooking the woods at the front of the House	Junior suite double or twin with superking bed	Bathroom with roll top bath and shower Note: a few steps down from bedroom	

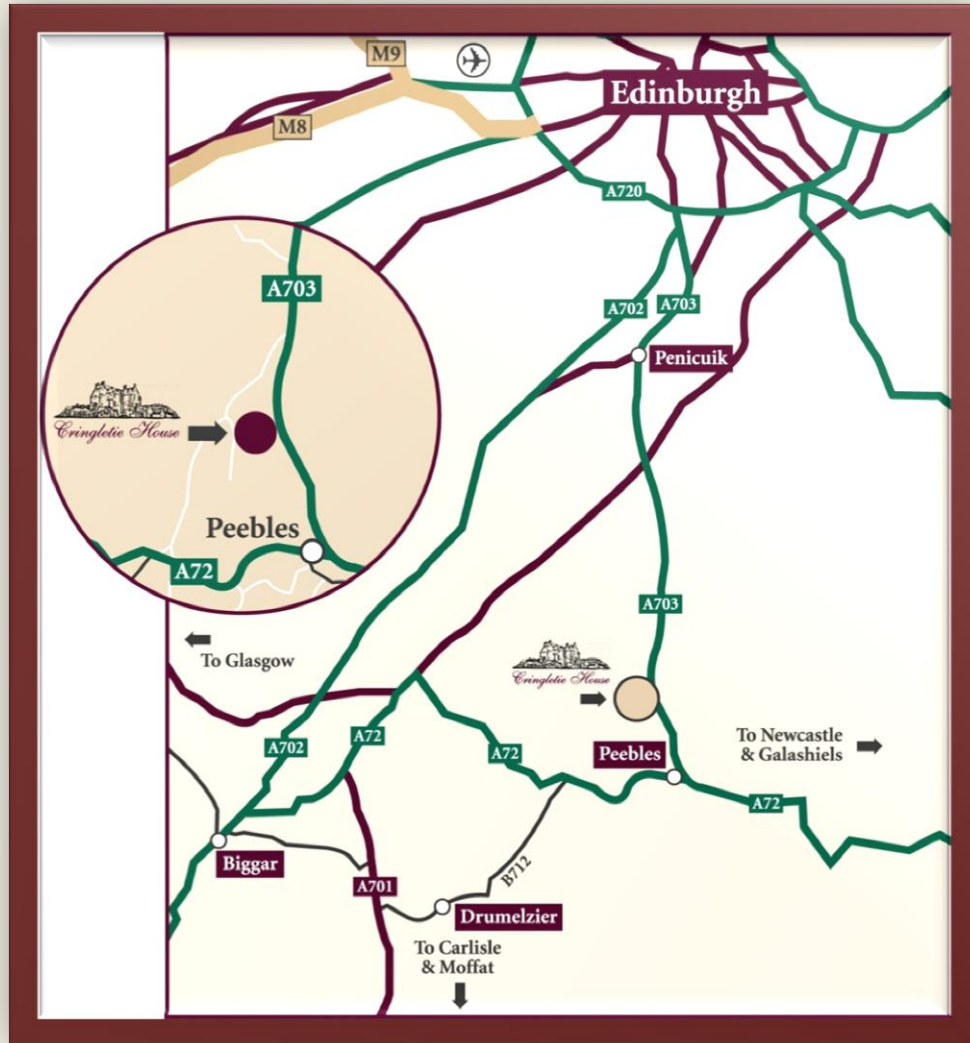
Stobo Next to Rosetta	Cosy loft room with coombed ceiling and dormer windows looking to the Tweed Valley and the woods at the front	Classic superking bed	Shower over bath	
Rosetta	Spacious loft room with coombed ceiling and dormer windows looking to the Tweed Valley and the rear gardens and hills beyond	Luxury twin or double with superking bed one or two extra bed(s)**	Shower over bath	
Eddleston Close to Moorfoot	Cosy loft room with coombed ceiling and dormer windows overlooking the rear gardens and the hills beyond	Classic twin or double with superking bed	Shower over bath	
Moorfoot	Cosy and sweet loft room with coombed ceiling and dormer windows overlooking the woods at the front of the House	Classic room with king bed	Shower over bath	
Ardean	2 bedroom spa cottage in the grounds	Two bedrooms with either double or twin beds	Bathroom with bath and shower and bathroom with shower	

Please note that the lift fully services the first and second floors and goes up to halfway second and third floor which leaves a small number of steps to reach the third floor.

Location – EH45 8PL

Edinburgh bypass 30 minutes

Airport / Railway station – 40 minutes



To discuss your requirements, please get in touch with Jeremy Osbourne,

General Manager

gm@cringletie.com

01721 725744 (ddi)

Cringletie House

Hotel, Restaurant and Gardens

Peebles

EH45 8PL

T 01721 725750

www.cringletie.com